

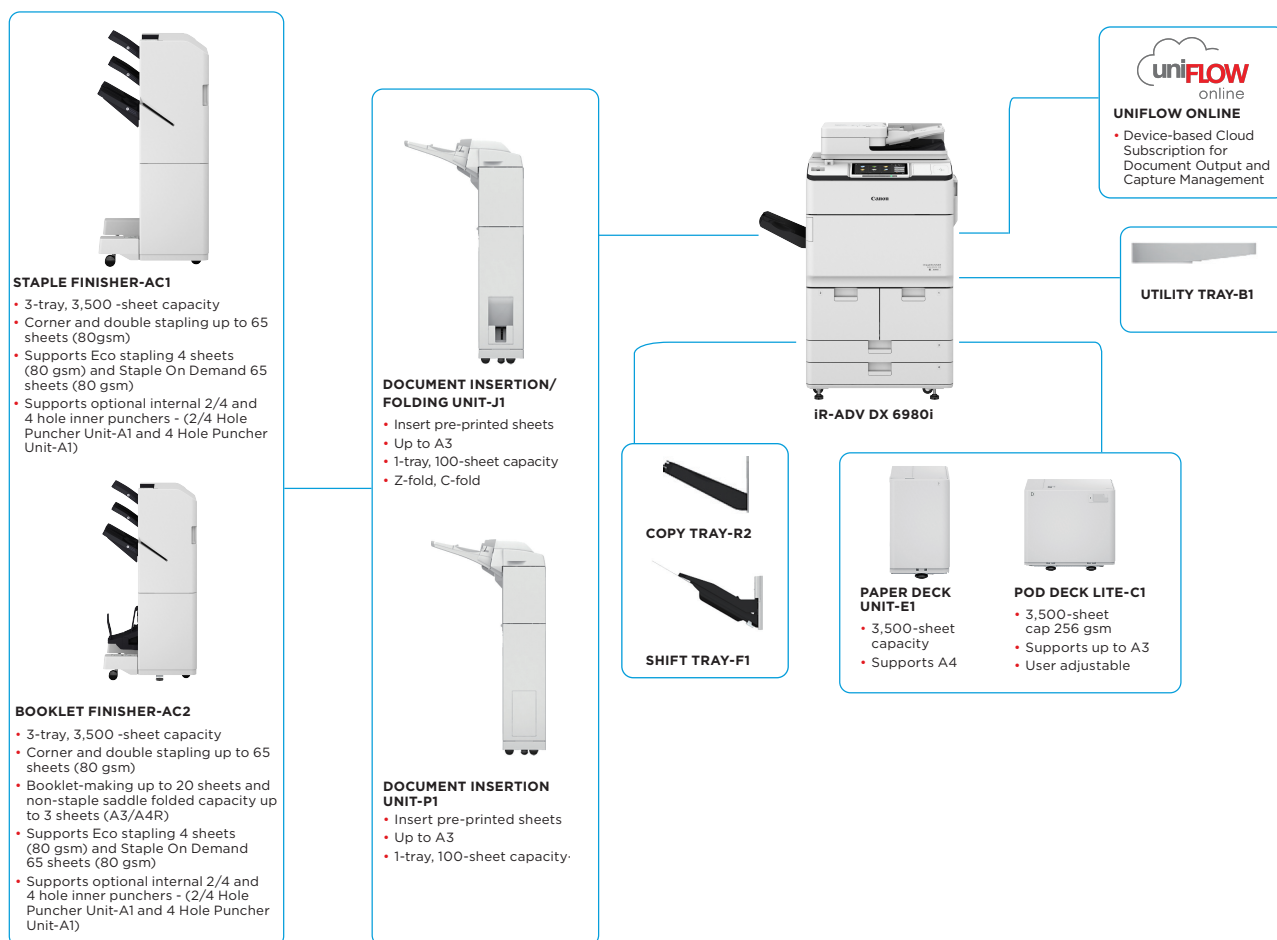
# imageRUNNER ADVANCE DX 6980i

## IMPROVE BUSINESS EFFICIENCY WITH MONO A3 MULTIFUNCTION DEVICE THAT STREAMLINES WORKFLOWS WITH AUTOMATION AND CLOUD CONNECTIVITY



Canon Europe Ltd.  
BLI 2023-2024 Most Reliable A3 Brand

### MAIN CONFIGURATION OPTIONS



This flat configuration is for illustration purpose only. For a complete list of options and the exact compatibility relationships, please refer to the online [product configurator](#).

The Unified Firmware Platform (UFP) ensures that the latest feature upgrades and protection are available, for an enhanced user experience across the entire iR ADVANCE DX portfolio.



# TECHNICAL SPECIFICATIONS

# imageRUNNER ADVANCE DX 6980i

## MAIN UNIT

<b>Machine type</b>	A3 Monochrome Laser Multifunctional
<b>Core functions</b>	Print, Copy*, Scan*, Send*, Store and Optional Fax*
<b>Processor</b>	1.8GHz Dual Core Processor
<b>Control Panel</b>	Standard: 10.1" TFT LCD WSVGA Colour Touch panel
<b>Memory</b>	Standard: 4.0GB RAM
<b>Storage</b>	Standard: (SSD) 256 GB Optional: (SSD) 1TB
<b>Mirroring Hard Disk Drive</b>	Optional
<b>Interface Connection</b>	Network Standard: 1000Base-T/100Base-TX/10Base-T, Optional: Wireless LAN (IEEE 802.11 b/g/n) Others Standard: USB 2.0 (Host) x1, USB 3.0 (Host) x1, USB 2.0 (Device) x1; Optional: Serial Interface, Copy Control Interface
<b>Paper Supply Capacity (A4, 80gsm)</b>	Standard: 4,200 sheets 100-sheet Multi-purpose tray x1 550-sheet cassette x 2 1,500-sheet Paper Deck x 2 Maximum: 7,700 sheets (with Paper Deck Unit-E1 or POD Deck Lite-C1)
<b>Paper output capacity (A4, 80gsm)</b>	250 Sheets (with Copy Tray-R2) Maximum: 3,500 Sheets (with Staple Finisher-AC1 or Booklet Finisher-AC2)
<b>Finishing capabilities</b>	With options: Collate, Group, Offset, Staple, Saddle Stitch, Hole Punch, Eco Staple, Staple On Demand, Document Insertion, Z-fold, C-fold
<b>Supported media types</b>	Multi-purpose tray: Thin, Plain, Recycled, Color, Heavy, Bond, Transparency, Label, Pre-punched, Letterhead, Tab, Tracing  Paper Decks (Right/Left): Thin, Plain, Recycled, Color, Heavy, Bond, Pre-punched, Letterhead  Paper Cassettes (Upper/Lower): Thin, Plain, Recycled, Color, Heavy, Bond, Pre-punched, Letterhead, Tab *Tab Feeding Attachment-B1 is required.
<b>Supported media sizes</b>	Multi-purpose tray: Standard size: A3, A4, A4R, A5*, A5R, A6R*, B4, B5, B5R Custom size: 100.0 x 148.0 mm to 297.0 x 487.7 mm Free size: 100.0 x 148.0 mm to 297.0 x 487.7 mm *1 Supported media weights: more than 64 gsm *2 Supported media weights: more than 91 gsm  Paper Decks (Right/Left): Standard size: A4, B5  Paper Cassettes (Upper/ Lower): Standard size: A3, A4, A4R, A5R, B4, B5, B5R Custom size: 139.7 x 182.0 mm to 297 x 487.7 mm
<b>Supported media weights</b>	Multi-purpose tray: 52 to 256 gsm Paper Deck(Right/Left): 52 to 220 gsm Paper Cassette(Upper/Lower): 52 to 220 gsm Duplex: 52 to 220 gsm
<b>Warm-up Time</b>	Quick Start-up Mode: 4 Seconds or less* *Time from device power on to when the copy icon appears and is enabled to operate on the touch panel display  From Sleep Mode: 30 Seconds or Less  From Power On: 30 seconds or less* *Time from device power-on, until copy ready(not print reservation)
<b>Dimensions (W x D x H)</b>	670 x 770 x 1,185 mm *With optional Upright Control Panel: 1,170 x 770 x 1,252 mm
<b>Installation Space(W x D)</b>	Basic: 1,533 x 1,353 mm (with Multi-purpose tray/ upper-right cover open + Front cover open + Copy Tray) Fully configured: 2,436 x 1,353 mm (with POD Deck Lite-C1 + Document Insertion/Folding Unit-J1 + Booklet Finisher-AC2/Staple Finisher-AC1 + Main unit Front cover open)
<b>Weight</b>	Approx. 219 kg <sup>1</sup> , Approx. 223 kg <sup>2</sup> <sup>1</sup> Including ADF, Flat Touch Panel and the toner bottle. <sup>2</sup> Including ADF, optional Upright touch panel and the toner bottle.

## PRINT SPECIFICATIONS

<b>Print Speed</b>	Up to 80 ppm (A4), up to 40 ppm (A3), up to 58 ppm (A4R), up to 35ppm (A5R)
<b>Print Resolution (dpi)</b>	1,200 x 1,200
<b>Page description languages</b>	Standard: UFRIL, PCL6, Optional: Adobe®PostScript®3™
<b>Direct Print</b>	Supported file types: PDF, EPS, TIFF/JPEG, and XPS
<b>Printing from mobile and cloud</b>	AirPrint, Mopria and Universal Print by Microsoft, Canon PRINT Business, uniFLOW Online (optional) A range of software and MEAP-based solutions are available to provide printing from mobile devices or internet-connected devices and cloud-based services depending on your requirements. Please contact your sales representative for further information

## Fonts

PS fonts: 136 Roman  
PCL fonts: 93 Roman, 10 Bitmap fonts, 2 OCR fonts, Andale Mono WT J/K/S/T<sup>1</sup> (Japanese, Korean, Simplified and Traditional Chinese), Barcode fonts<sup>2</sup>

<sup>1</sup> Optional PCL International Font Set-A1 is required.  
<sup>2</sup> Optional Barcode Printing Kit-D1 is required.

## Print Features

Secured Print, Secure Watermark, Header/Footer, Page Layout, Two-sided Printing, Mixed Paper Sizes/Orientations, Front/Back Covers, Toner Reduction, Poster Printing, Forced hold printing, Print Date, Scheduled Printing, Printing Using a Virtual Printer

## Operating System

UFRIL: Windows<sup>®</sup>10/11/Server 2012/Server 2012 R2/Server 2016/Server 2019/Server 2022, MAC OS X (10.13 or later)  
PCL: Windows<sup>®</sup>10/11/Server 2012/Server 2012 R2/Server 2016/Server 2019/Server 2022, MAC OS X (10.13 or later)  
PS: Windows<sup>®</sup>10/11/Server 2012/Server 2012 R2/Server 2016/Server 2019/Server 2022, MAC OS X (10.13 or later)  
PPD: Windows<sup>®</sup>10/11, MAC OS X (10.13 or later)

## COPY SPECIFICATIONS

<b>Copy Speed</b>	Up to 80 ppm (A4), up to 40 ppm (A3), upto 58 ppm (A4R), upto 35 ppm (A5R)
<b>First-Copy-Out Time (A4)</b>	Approx. 3.1 seconds or less
<b>Copy resolution (dpi)</b>	600x 600
<b>Multiple Copies</b>	Up to 9,999 copies
<b>Copy Density</b>	Automatic or Manual (9 Levels)
<b>Magnification</b>	Variable zoom: 25% to 400% (1% Increments) Preset reduction/enlargement: 25%, 50%, 70%, 100%(1:1), 141%, 200%, 400%
<b>Copy Features</b>	Preset R/E Ratios by Area, Two-Sided, Density Adjustment, Original Type Selection, Interrupt Mode, Book to Two Pages, Two-sided Original, Job Build, N on 1, Add Cover, Insert Sheets, Different Size Originals, Page Numbering, Copy Set Numbering, Sharpness, Erase Frame, Secure Watermark, Print Date, Gutter, Print & Check, Negative/Positive, Repeat Images, Merge Job Blocks, Mirror Image, Store in Mail Box, Superimpose Image, Copy ID Card, Skip Blank Pages, Free Size Original, Reserved copy, Copy Sample

## SCAN SPECIFICATIONS

<b>Type</b>	Single-pass Duplexing Automatic Document Feeder [2-sided to 2-sided (Automatic)] *Detect Feeder Multi Sheet Feed is supported. up to 200 Sheets
<b>Document Feeder Paper Capacity (80 gsm)</b>	Platen: Sheet, Book, and 3-Dimensional Objects Document Feeder media weight: 1-sided scanning: 38 to 220 gsm 2-sided scanning: 38 to 220 gsm *An acceptable weights of A6R or smaller is 50 to 220gsm.
<b>Supported media sizes</b>	Platen max. scanning size: up to 297.0 x 431.8 mm Document Feeder media size: A3, A4, A4R, A5, A5R, A6R, B4, B5, B5R, B6R, Custom size: 70.0 x 139.7 mm to 304.8 x 431.8 mm
<b>Scan Speed (ipm, BW/CL, A4)</b>	1-sided Scanning: 135/135 (300 x 300 dpi, send), 80/80 (600 x 600 dpi, copy) 2-sided Scanning: 270/270 (300 x 300 dpi, send), 160/90 (600 x 600 dpi, copy)
<b>Scan Resolution (dpi)</b>	Scan for Copy: 600 x 600 Scan for Send: (Push) 600 x 600 (SMB/FTP/WebDAV/IFAX), (Pull) 600 x 600 Scan for Fax: 600 x 600
<b>Pull Scan Specifications</b>	Colour Network ScanGear2. For both TWAIN and WIA Supported OS : Windows <sup>®</sup> 10/11/Server 2012/Server 2012 R2/Server 2016/Server 2019/Server 2022
<b>Scan Method</b>	Push Scan, Pull Scan, Scan to Box, Scan to Advanced Space, Scan to Network, Scan to USB Memory Key, Scan to Mobile device, Scan to cloud (uniFLOW - Online)

## SEND SPECIFICATIONS

<b>Destination</b>	Standard: E-mail/Internet FAX (SMTP), SMB3.1.1, FTP, WebDAV, Mail Box Optional: Super G3 FAX, IP Fax
<b>Address Book</b>	LDAP (2000)/Local (1600)/Speed dial (200)
<b>Send resolution (dpi)</b>	Push: up to 600 x 600 Pull: up to 600 x 600
<b>Communication protocol</b>	File: FTP(TCP/IP), SMB3.1.1 (TCP/IP), WebDAV E-mail/I-Fax: SMTP, POP3
<b>File Format</b>	Standard: TIFF, JPEG, PDF(Compact, Searchable, Apply policy, Optimize for Web, PDF/A-1b, Trace & Smooth, Encrypted, Device Signature, User Signature), XPS(Compact, Searchable, Device Signature, User Signature), Office Open XML (PowerPoint, Word)



# TECHNICAL SPECIFICATIONS

# imageRUNNER ADVANCE DX 6980i

<b>Universal Send Features</b>	Original Type Selection, Two-sided Original, Book to Two Pages, Different-size Originals, Density Adjustment, Sharpness, Copy Ratio, Erase Frame, Job Build, Delayed Send, Preview, Job Done Notice, File Name, Subject/Message, Reply-to, E-mail Priority, TX Report, Original Content Orientation, Skip Blank Pages	<b>Power consumption</b>	Maximum: Approx. 2,400 W Copying (with DADF continuous scan): Approx. 1,290 W <sup>1</sup> Standby: Approx. 256 W <sup>1</sup> Sleep mode: Approx. 0.9 W <sup>2</sup>
<b>FAX SPECIFICATIONS</b>		<b>Typical Electricity Consumption (TEC)*</b>	1.56 kWh *As per USA Energy Star 3.0
<b>Maximum Number of Connection Lines</b>	2	<b>Noise levels</b>	<b>Sound Power Level (LWA,m)</b> Active (1-sided): 72 dB,Kv 3 dB *Reference value: measured only one unit with ISO7779, described with ISO9296 (2017)
<b>Modem Speed</b>	Super G3: 33.6 kbps G3: 14.4 kbps		<b>Sound Pressure (LpAm)</b> Bystander's position: Active (1-sided): 57 dB* Standby: 33 dB* *Reference value: measured only one unit with ISO7779, described with ISO9296 (2017)
<b>Compression Method</b>	MH, MR, MMR, JBIG	<b>CONSUMABLES</b>	
<b>Resolution (dpi)</b>	400x400 (Ultra Fine), 200x400 (Super Fine), 200x200 (Fine), 200x100 (Normal)	<b>Toner Cartridge</b>	C-EXV 36 Black Toner
<b>Sending/Receiving Size</b>	Sending: A3, A4, A4R, A5 <sup>1</sup> , A5R <sup>1</sup> , B4, B5 <sup>2</sup> , B5R <sup>1</sup> Receiving: A3, A4, A4R, A5R, B4, B5, B5R <sup>1</sup> Sent as A4 <sup>2</sup> Sent as B4 short	<b>Toner (Estimated Yield @6% Coverage)</b>	56,000 pages
<b>FAX memory</b>	Up to 30,000 pages (2,000 jobs)	<b>SOFTWARE AND PRINTER MANAGEMENT</b>	
<b>Speed dials</b>	Max. 200	<b>Tracking and reporting</b>	For detailed information please visit our website <a href="https://www.canon-europe.com/business/">https://www.canon-europe.com/business/</a> Universal Login Manager (ULM) <a href="#">uniFLOW Online Express!</a> *For more information, please refer to uniFLOW Online Express/uniFLOW Online Technical Datasheets
<b>Group dials/destinations</b>	Max. 199 dials	<b>Remote management tools</b>	iW Management Console eMaintenance Content Delivery System
<b>Sequential broadcast</b>	Max. 256 addresses	<b>Scanning software</b>	Network ScanGear
<b>Memory backup</b>	Yes	<b>Optimisation tools</b>	Canon Driver Configuration Tool NetSpot Device Installer
<b>Fax Features</b>	Sender's Name (TTI), Selecting the Telephone Line (when sending fax), Direct Send, Delayed Send, Preview, Job Done Notice, TX Report, Interrupt Transmission, Sequential Broadcasting, Password/Subaddress Sending, Confidential Mailbox, 2 on 1 Log	<b>Platform</b>	MEAP (Multi-functional Embedded Application Platform)
		<b>Document Administration</b>	Kofax Power PDF (Optional)
<b>STORE SPECIFICATIONS</b>		<b>PAPER SUPPLY OPTIONS</b>	
<b>Mail Box (Number supported)</b>	100 User Inboxes, 1 Memory RX Inbox, 50 Confidential Fax Inboxes Maximum 30,000 Pages (2,000 jobs) Stored	<b>Paper Deck Unit-E1</b>	Paper Capacity: 3,500 sheets (80 gsm) Paper Type: Thin, Plain, Recycled, Color, Heavy, Bond, Pre-punched, Letterhead Paper Size: A4, B5 Paper Weight: 52 to 256 gsm Power Source: from the Main Unit Dimensions (W x D x H): 340 x 630 x 572 mm (attached to the main unit) Weight: Approx. 34 kg
<b>Advanced Space</b>	Communication Protocol: SMB or WebDAV SUPPORTED CLIENT PC: WINDOWS* 10/11 CONCURRENT CONNECTIONS (MAX.): SMB:64, WEBDAV:3	<b>POD Deck Lite-C1</b>	Paper Capacity: 3,500 sheets (80 gsm) Paper Type: Thin, Plain, Recycled, Color, Heavy, Tracing, Bond, Transparency, Label, Pre-punched, Letterhead, Tab Paper Size: A3, A4, A4R, B4, A5R, B5, B5R, Custom size: 139.7 x 182.0 mm to 297.0 to 487.7 mm Paper Weight: 52 to 256 gsm Power Source: 220-240V, 50/60Hz, 1.2A Dimensions (W x D x H): 633 x 686 x 574 mm (attached to the main unit) Weight: Approx. 68 kg
<b>Advanced Space available disc space</b>	Standard:16 GB (With option: max. 480GB.)	<b>OUTPUT OPTIONS*</b>	*Paper capacity may vary with different of paper type/size.
<b>Advanced Space Features</b>	Authentication for Advanced Space Log-in, Sort Function, Printing a PDF File with a Password, imageWARE Secure Audit Manager Support, Search, File Preview, Authentication Management, Open to public, URI TX, Backup/Restore	<b>Copy Tray-R2</b>	Provides a simple tray for basic output needs. Capacity: 250/100 sheets (1-sided/2-sided, 80 gsm) Dimensions (W x D x H): 420 x 382 x 175 mm
<b>SECURITY SPECIFICATIONS</b>		<b>Staple Finisher-AC1</b>	Tray Capacity (with 80gsm paper): Upper Tray: A4, A5, A5R, A6R, B5: 250 sheets A3, A4R, B4, B5R: 125 sheets Mid Tray: Same as upper tray Lower Tray: A4, A5, A5R, B5: 3,000 sheets A3, A4R, B4, B5R: 1,500 sheets A6R: 250 sheets Paper Weight: 52 to 256 gsm Staple Position: Corner, Double Staple Capacity: A4, B5: 65 sheets (52 to 90 gsm) A3, A4R, B4: 40 sheets (52 to 90 gsm) Eco Staple: A3, A4 5 sheets (52 to 64 gsm) 4 sheets (65 to 81.4 gsm) 3 sheets (82 to 105 gsm) Staple On Demand: 65 sheets Power supply: From the main unit Dimensions (W x D x H): 656 x 623 x 1,195 mm (when the extension tray and rotary tray are extended) Weight: Approx. 36 kg
<b>Authentication and Access Control (activation required)</b>	User Authentication (Picture Login, Picture and PIN Login, Card Login, Username and Password Login, Function Level Login, Mobile Login), Department ID Authentication (Department ID and PIN Login, Function Level Login), uniFLOW Online Express (PIN Login, Picture Login, Picture and PIN Login, Card Login, Card and PIN Login, Username and Password Login, Department ID and PIN Login, Function Level Login), Access Management System (Access Control)	<b>Booklet Finisher-AC2</b>	(Includes the above Staple Finisher-AC1 basic staple specifications.) Saddle Stitch paper size: A3, A4R, B4, Custom Size (195.0 x 270.0 mm to 297.0 x 431.8 mm) Saddle Stitch Staple Capacity: 20 sheets x 10 sets (52 to 81.4 gsm) (including 1 cover sheet up to 256 gsm) Non Staple Folded Bunch Capacity: 3 sheets (52 to 105 gsm) Power supply: From the main unit Dimensions (W x D x H): 656 x 623 x 1,195 mm (when the extension tray and rotary tray are extended) Weight: Approx. 60 kg
<b>Document Security</b>	Print Security (Secure Print, Encrypted Secure Print, Forced Hold Printing, uniFLOW Secure Print*), Receive Data Security (Confidential Fax Inbox Forwarding Received Documents Automatically), Scan Security (Encrypted PDF, Device Signature PDF/XPS, User Signature PDF/XPS, Adobe LiveCycle® Rights Management ES2.5 Integration), BOX Security (Mail Box Password Protected, Advanced Space Access Control), Send Data Security (Setting for requesting password input per transmission, Restricted E-mail/File send functions, Confirming FAX number, Allow/Restrict Fax Driver Transmissions, Allow/Restrict Sending from History, S/MIME Support), Document Tracking (Secure Watermark) <sup>1</sup> Requires uniFLOW Online / uniFLOW		
<b>Network Security</b>	TLS 1.3, IPsec, IEEE802.1X authentication, SNMP V3.0, Firewall Functionality (IP/MAC Address Filtering), WPA3 support (Wi-Fi), Dual Network Support (Wired LAN/Wireless LAN, Wired LAN/Wired LAN), Disabling Unused Functions (Enabling/Disabling Protocols/Applications, Enabling/Disabling Remote UI, Enabling/Disabling USB Interface), Communication Line Separation (G3 FAX, USB Port, Advanced Space, Scan and Send -Virus Concerns for E-mail Reception)		
<b>Device Security</b>	Protecting SSD Data [SSD Data Encryption (FIPS 140-2/140-3*), SSD Lock], Standard SSD Initialize, Trusted Platform Module (TPM2.0), Job Log Conceal Function, Protecting MFD Software Integrity, Checking MFD Software Integrity & Platform Firmware Resiliency (NIST SP800-193) with Automatic System Recovery (Verify System at Startup, Runtime Intrusion Detection), Comply IEEE2600.2 (Common Criteria Certification) *validation pending		
<b>Device Management and Auditing</b>	Administrator Password, Digital Certificate And Key Management, Audit Log, Remote Management Two-Factor Authentication, Cooperating with External Security Audit System (Security Information and Event Management), Image Data Logging, Security Policy Setting		
<b>ENVIRONMENTAL SPECIFICATIONS</b>			
<b>Operating Environment</b>	Temperature: 10 to 30°C Humidity: 20 to 80 % RH (Relative Humidity)		
<b>Power Source</b>	220-240V, 50/60Hz, 10A		



# TECHNICAL SPECIFICATIONS

# imageRUNNER ADVANCE DX 6980i

<b>2/4 HOLE PUNCHER UNIT-A1</b>	<p>(Requires either the Staple Finisher-AC1 or Booklet Finisher-AC2) Two or Four Holes Acceptable Punch Paper Weight: 52 to 256 gsm Acceptable Punch Paper Size: Two holes A3, A4, A4R, A5, B4, B5, B5R Four holes A3, A4 Power Source: From the finisher</p>	<b>HARDWARE ACCESSORIES</b>	<p><b>Card Readers</b></p> <p>Various card readers available e.g. MiCard Plus. Please contact local Canon Office for more details. Copy Card Reader-F1 Copy Card Reader Attachment-A5</p> <p><b>Others</b></p> <p>Utility Tray-B1 Tab Feeding Attachment Kit-B1 Shift Tray-F1 Numeric Keypad-A2 Finisher Jogger Kit-A1</p>
<b>4 Hole Puncher Unit-A1</b>	<p>(Requires either the Staple Finisher-AC1 or Booklet Finisher-AC2) Four Holes Acceptable Punch Paper Weight: 52 to 256 gsm Acceptable Punch Paper Size: Four holes A3, A4, A4R, A5, B4, B5, B5R Power Source: From the finisher</p>	<b>SECURITY OPTIONS</b>	<p><b>Data security</b></p> <p>250GB SSD-A1 (used with Memory Mirroring Kit-A1) 1TB SSD-A1 Memory Mirroring Kit-A1</p>
<b>Document Insertion Unit-P1</b>	<p>(Requires either the Staple Finisher-AC1 or Booklet Finisher-AC2) Number of trays: 1 Tray Capacity: 100 Sheets (with 80 gsm paper) Acceptable Paper Type: Thin, Plain, Recycled, Color, Heavy, Coated, Bond, Letterhead, Tab Acceptable Paper Sizes: A3, A4, A4R, B4, B5, B5R Acceptable Paper Weight: 60 to 256 gsm Power Source: 100-240V, 50/60Hz, 1.0A Dimensions (W x D x H): 247x 679 x 1,242 mm (attached to the device: width excluding document tray) Weight: Approx. 40 kg</p>	<b>SYSTEM AND CONTROLLER OPTIONS</b>	<p><b>Print Accessories</b></p> <p>PCL International Font Set-A1 PS Printer Kit-BC1</p> <p><b>Barcode Printing</b></p> <p>Barcode Printing Kit-D1</p> <p><b>System Accessories</b></p> <p>Serial Interface Kit-K3 Copy Control Interface Kit-A1 Wireless LAN Board-G1</p>
<b>Document Insertion / Folding Unit-J1</b>	<p>(Requires either the Staple Finisher-AC1 or Booklet Finisher-AC2) Number of trays: 1 Supported Folding Type: Z-Fold, C-Fold Acceptable Paper Type: Insertion Unit: Thin, Plain, Recycled, Color, Heavy, Coated, Bond, Letterhead, Tab Z-Fold/C-Fold: Thin, Plain, Recycled, Color Acceptable Paper Sizes: Insertion Unit: A3, A4, A4R, B4, B5, B5R Z-Fold: A3, A4R, B4 C-Fold: A4R Acceptable Paper Weight: Insertion Unit: 60 to 256 gsm Z-Fold/C-Fold: 60 to 105 gsm Output Capacity (with 80 gsm paper): Insertion: 100 Sheets Z-Fold*: A3, B4: 30 sheets (80 gsm) A4R: 10 sheets C-fold: A4R: 40 sheets (80 gsm) *Z-Fold output to the Staple Finisher-AC1 or Booklet Finisher-AC2 Power Source: 100-240V, 50/60Hz, 1.0A Dimensions (W x D x H): 247 x 679 x 1,242 mm (attached to the device: width excluding document tray) Weight: Approx. 76 kg</p>	<b>OTHER OPTIONS</b>	<p><b>Accessibility Accessories</b></p> <p>ADF Access Handle-A1 Voice Guidance Kit-G1 Voice Operation Kit-D1</p> <p><b>Staple Cartridge</b></p> <p>Staple Cartridge-X1 Staple Cartridge-Y1</p>
		<b>Fax Accessories</b>	<p>Super G3 FAX Board-AX1 Remote Fax Kit-A1 IP FAX Expansion Kit-B1</p>

## Software & Solutions



## Certifications and compatibility



**Canon Ireland**  
3006 Lake Drive  
Citywest, Saggart  
Co. Dublin, Ireland  
Telephone No: 01 2052400  
Facsimile No: 01 2052525  
canon.ie

**Canon (UK) Ltd**  
The Bower  
4 Roundwood Avenue  
Stockley Park  
Uxbridge  
UB11 1AF

**Canon Inc.**  
canon.com  
**Canon Europe**  
canon-europe.com  
English edition  
© Canon Europa N.V., 2023

